



CAMPUS PLACEMAKING: UPDATE

July 26, 2018

IMAGINE. DISCOVER. CULTIVATE.

OVERVIEW

- Stockyards Update
- Riverfront Update





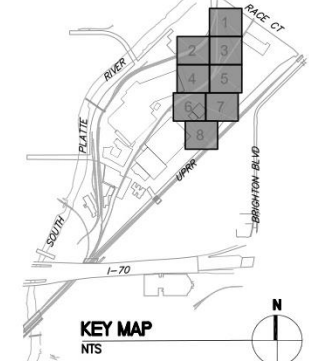
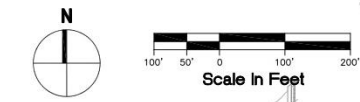
STOCKYARDS UPDATE

IMAGINE. DISCOVER. CULTIVATE.



LEGEND

ENHANCED PAVING WITH HISTORIC ACCENTS	
UNIT PAVER TYPE 1	
UNIT PAVER TYPE 2	
UNIT PAVER TYPE 3	
CONCRETE PAVING - STANDARD GRAY	
CONCRETE PAVING - INTEGRAL COLOR	
PERMEABLE PAVING / PLANTING	



15% Design Submittal 6/1/18 NOT FOR CONSTRUCTION

Project No./Code	N/A	N/A
Designer: AM	Structure Numbers	N/A
Detailer: DR	Numbers	N/A

M I G
 METRIC INTERIOR GROUP
 1000 SOUTH WASHINGTON AVENUE
 DENVER, CO 80202
 P: 303.733.1100
 F: 303.733.1100

MIDWESTINSITE
 1000 SOUTH WASHINGTON AVENUE
 DENVER, CO 80202
 P: 303.733.1100
 F: 303.733.1100

Print Date: _____
 File Name: _____
 Horiz. Scale: _____
 Vert. Scale: _____
 L1.0

Project No./Code: N/A
 Structure Numbers: N/A
 Sheet Number: 13 OF 37
 Subset: LAYOUT/Sheet: 1 OF 9



IMAGINE. DISCOVER. CULTIVATE.



RIVERFRONT UPDATE

IMAGINE. DISCOVER. CULTIVATE.

Master Plan Big Ideas

Improve Access to and Health of the South Platte River

- Move rail from river's edge and consolidate to center of site
- Bury or move the Delgany Interceptor sewer lines
- Relocate National Western Drive to allow for better river and Event Pavilion access
- Improve river habitat and health
- Create recreational trails and educational areas along the river



IMAGINE. DISCOVER. CULTIVATE.

The NWC Guiding Principles



Engage the River and Nature

The importance of embracing the South Platte River with its historic and ecological attributes creates a key framework for how people will experience the NWCC. The National Western Center will:

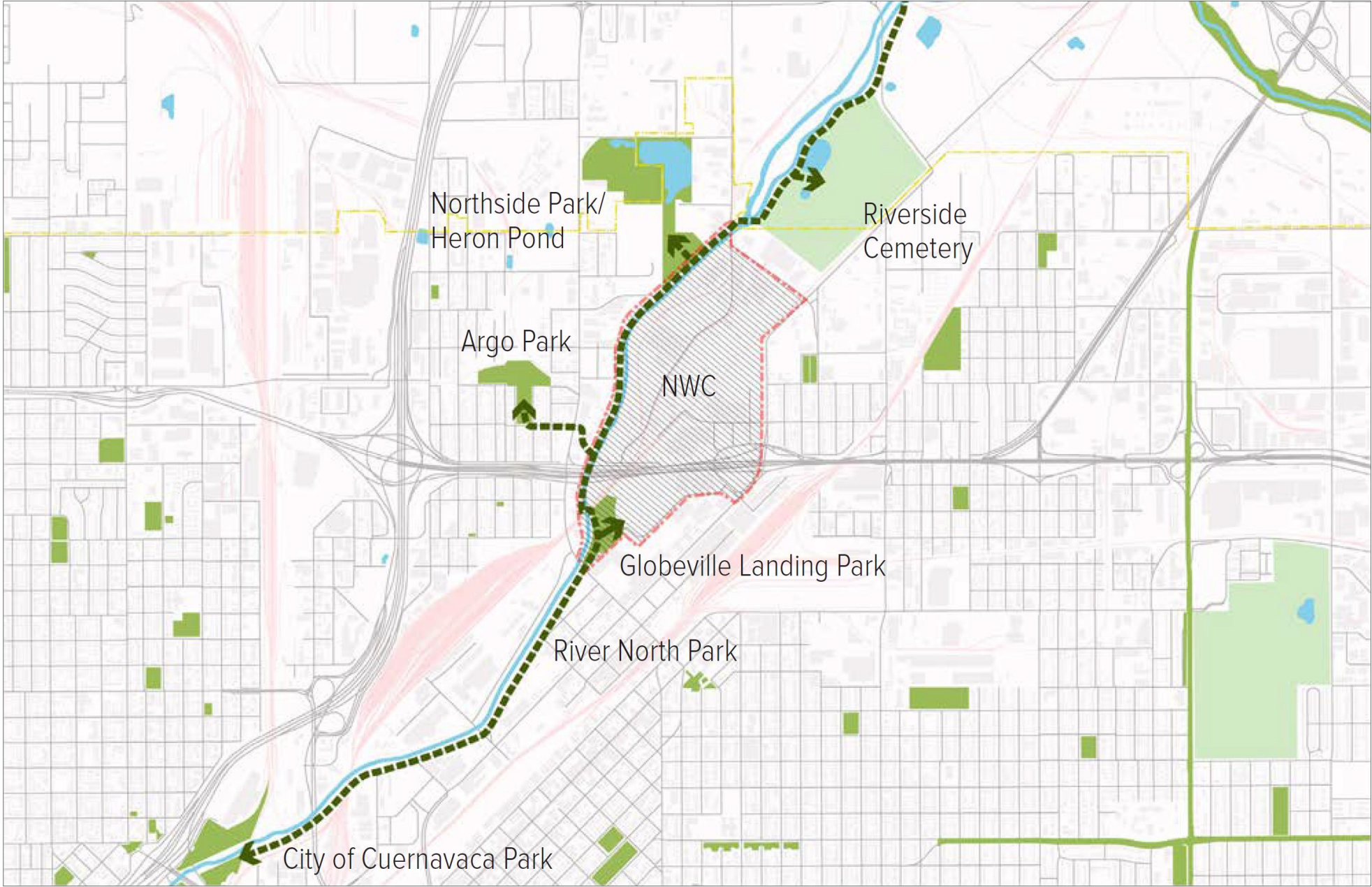
- Recognize the historic, ecological, and future value of the site's proximity to the South Platte River as a key component of the NWCC experience.
- Celebrate and respect the natural world by promoting the restoration of the river's ecosystem, water quality and animal habitat.
- Build on current successes and recreational activity along the river, establishing a river-focused urban environment that is healthy, habitable and connected.
- Enhance the safety of the river corridor and the surrounding region, serving as an integral connector of the adjacent neighborhoods.
- Serve as one of several new gateways into and out of the NWCC.

Engage the River and Nature (ERN)

- ERN 1: Create safe, intentional connections to the river and natural areas
 - ERN 1.1: Provide diverse yet focused visual and physical access to nature and the river
 - ERN 1.2: Create series of green spaces on site that connect to one another and to nearby green spaces, trails, parks
- ERN 2: Use nationally or internationally recognized rating system for landscape design and maintenance, favor the use of native plants, and integrate with water use goals (EER 3)
- ERN 3: Replace or integrate physical infrastructure with natural systems and/or incorporate functional biomimicry and biophilic (green infrastructure) design principles wherever possible
 - ERN 3.1: Treat stormwater onsite, using various methods throughout the site, to create net zero or net positive impact on stormwater quality and quantity entering the South Platte River
- ERN 4: Provide education and outreach on site related to the South Platte River and its watershed and include educational components in water quality features, wastewater treatment, and water conservation measures
- ERN 5: Consider impacts to the South Platte River watershed during all stages of decision making (design, construction, operations, etc.) to support the river containing swimmable, fishable water
- ERN 6: Habitats along the river meet key diversity and health indicators and provide appropriate biological corridors linking to other habitats in surrounding areas



Connections to Large River Corridor



IMAGINE. DISCOVER. CULTIVATE.

Water Quality in Master Plan



Drainage and Water Quality provide an important element in the overall regeneration of the site and will incorporate best management practice techniques.





River Corridor and Park Context

IMAGINE. DISCOVER. CULTIVATE.



IMAGINE. DISCOVER. CULTIVATE.



525,000 sq. ft.

ARGO PARK



12 ACRES



583,000 sq. ft.

HERON POND/ HELLER/ CARPIO-SANGUINETTE PARK



80 ACRES



410,000 sq. ft.

GLOBEVILLE PARK



10 ACRES



127,000 sq. ft.

ELYRIA PARK



3 ACRES



460,000 sq. ft.

SWANSEA PARK



10.5 ACRES



125,000 sq. ft.

DUNHAM PARK



3 ACRES

















IMAGINE. DISCOVER. CULTIVATE.

KEY

- 1. ARGO PARK
- 2. HERON POND / HELLER / CARPIO – SANGUINETTE PARK
- 3. GLOBEVILLE LANDING
- 4. ELYRIA PARK
- 5. SWANSEA PARK
- 6. DUNHAM PARK

	AMPHITHEATER ANFITHEATRO	BASKETBALL COURT CANCHA DE BASQUETBOL	BOULDER WALL MURO DE ESCALADA	OBSERVATION DECK PLATAFORMA DE OBSERVACIÓN	PLAYGROUND PATIO DE JUEGOS	PICNIC AREA ÁREA DE PICNIC	RIVERFRONT ACCESS ACCESO A LA RIBERA DEL RÍO	SKATEPARK PARQUE DE PATINAJE	SPORTS FIELD CAMPO DE DEPORTES	SWIMMING POOL ALBERCA	TRAILS SENDEROS	VOLLEYBALL COURT CANCHA DE VOLEIBOL	WATER QUALITY CALIDAD DEL AGUA
--	-----------------------------	--	----------------------------------	---	-------------------------------	-------------------------------	---	---------------------------------	-----------------------------------	--------------------------	--------------------	--	-----------------------------------


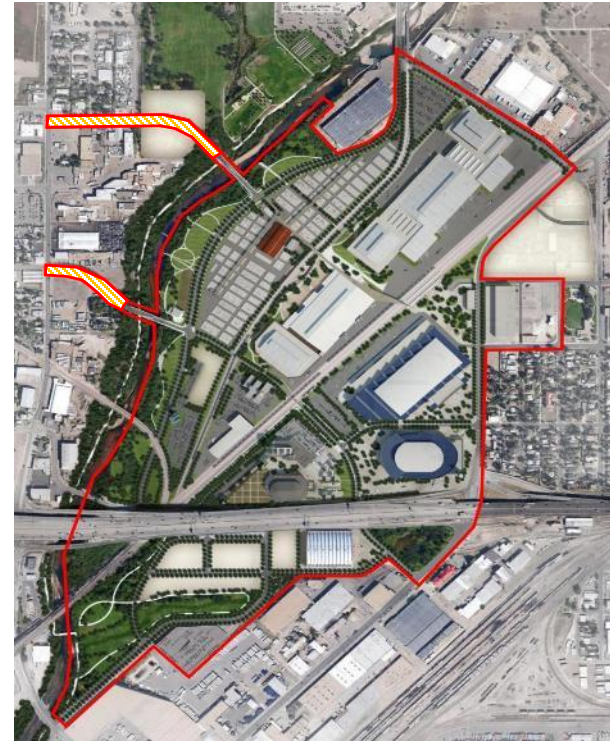
									 				
01				✓	✓	✓			✓	✓			
02	✓			✓		✓					✓		✓
03			✓	✓	✓	✓	✓				✓		
04		✓			✓	✓		✓				✓	
05		✓			✓	✓			✓		✓	✓	
06				✓	✓	✓							

 Existing Amenity
Actividad Actual
 Planned Amenity
Actividad Planificada



Public Meeting # 1

- Input on:
 - Community uses
 - Riverfront program
 - Events



IMAGINE. DISCOVER. CULTIVATE.

PLACEMAKING FOR THE NATIONAL WESTERN CENTER

WHAT MAKES A PLACE GREAT?
Great places come from great ideas. And great ideas start with the community.

The National Western Center and its partners are currently undergoing a Placemaking Study to gather input from neighbors and surrounding communities on how the public areas of the new center will be used. This input will help create a year-round destination that connects communities through education, entertainment, history and culture.

WHAT IS PLACEMAKING?
Placemaking is a people-centered approach to planning and designing public spaces that reflect the needs, desires and aspirations of the community. It's about tapping into YOUR ideas for how YOU want to experience this space.

As we work to transform the National Western Center into a site where people and experiences converge to create a global destination for agricultural heritage and innovation, we are seeking input from the community on:

- **Programming opportunities for the large plaza, stock yard, etc.**
How do you see this space used; for summer farmers markets? Family-friendly play groups and movie nights? Pop-up shopping and flea markets? Seasonal festivals and celebrations?
- **Potential uses for the area around the river**
Picnic tables or a play area? Yoga classes or fitness lessons? Riverside concerts and farm-to-table dinners?

Placemaking is about finding out what you want to DO here, how you want to FEEL here and what you want to SEE in this vibrant, versatile space. Whatever your vision is, we want to hear it.


WHY IS THIS PLACEMAKING STUDY IMPORTANT?
The Globeville and Elyria Swansea Neighborhood Plans were instrumental in developing a vision for the National Western Center, and we are committed to creating a space that supports a unique, strong, connected and healthy community.

Through this process and your input, together we will create a place that:

- Strengthens the community
- Improves mobility
- Enhances quality of life
- Celebrates our unique heritage

When it comes to making truly great places, the community is the expert and the inspiration.

HOW CAN YOU GET INVOLVED?
Your participation is vital to achieving the vision of the National Western Center.



Learn more about upcoming events at nationalwesterncenter.com or contact Julio Sosen at julio@city-gyr.com or 303-905-4108.



Public Meeting # 1



WHAT USES WOULD YOU LIKE TO SEE ON THE CAMPUS? ¿QUÉ USOS LE GUSTARÍA VER EN EL RECINTO?

POSTER: WHAT USES WOULD YOU LIKE TO SEE ON THE CAMPUS? ¿QUÉ USOS LE GUSTARÍA VER EN EL RECINTO? (English and Spanish text describing the survey purpose)

OFFICES (OFICINAS)

HOUSING (VIVIENDAS)

HOTELS (HOTELERÍA)

OTHER APPROPRIATE USES (OTROS USOS ADECUADOS)

RESEARCH / TECH INVESTIGATION / TECNO

USES THAT ARE NOT APPROPRIATE (USOS QUE NO SON ADECUADOS)

Handwritten notes: Con-working Space, Tech activation area, Lightbar, other, MUSEUM

LEGEND (Legend with color-coded dots for various use categories)

WHAT TYPES OF RETAIL ARE APPROPRIATE FOR THE CAMPUS? ¿QUÉ TIPOS DE VENTA MINORISTA SON ADECUADOS PARA EL RECINTO?

POSTER: WHAT TYPES OF RETAIL ARE APPROPRIATE FOR THE CAMPUS? ¿QUÉ TIPOS DE VENTA MINORISTA SON ADECUADOS PARA EL RECINTO? (English and Spanish text describing the survey purpose)

LOCAL / HEALTHY FOOD (COMIDA LOCAL / SALUDABLE)

RESTAURANTS (RESTAURANTES)

SHOPPING (COMPRAS)

WHAT AMENITIES DO YOU WANT? ¿QUÉ AMENIDADES QUISIERAS?

POSTER: WHAT AMENITIES DO YOU WANT? ¿QUÉ AMENIDADES QUISIERAS? (English and Spanish text describing the survey purpose)

ARGO PARK

GLOBEVILLE PARK

ELYRIA PARK

SWANSEA PARK

DUNHAM PARK

HERSON PARK, HELLER, GARPIO-BANGNETTIC PARK

STICKERS HERE: (A grid of checkboxes for selecting amenities)

LEGEND (Legend for the amenity survey)

RIVERFRONT AMENITY OPTIONS EJEMPLOS DE ACTIVIDADES (USE STICKERS TO VOTE USA CALCOMANÍAS PARA VOTAR)

POSTER: RIVERFRONT AMENITY OPTIONS EJEMPLOS DE ACTIVIDADES (USE STICKERS TO VOTE USA CALCOMANÍAS PARA VOTAR) (English and Spanish text describing the survey purpose)

AMPHITHEATER (AMFITEATRO)

TRAILHEAD (COMIENZO DEL SENDERO)

OBSERVATION DECK (PLATAFORMA DE OBSERVACIÓN)

RIVERFRONT ACCESS (ACCESO A LA RIBERA DEL RÍO)

TRAILS (SENDEROS)

INTERPRETIVE SIGNAGE (SEÑALIZACIÓN INTERPRETATIVA)

OUTDOOR CLASSROOM (SALA DE CLASES AL AJA)

WATER QUALITY (CALIDAD DEL AGUA)

FOOD / DRINK / COFFEEHOUSE (COMIDA / BEBIDA / CAFETERÍA)

PICNIC AREA (ÁREA DE PÍCNIC)

Handwritten notes: Skatepark! (concrete), Other area for sports or other activities

WHAT EVENTS WOULD YOU ATTEND AT THE FUTURE NATIONAL WESTERN CENTER? ¿A QUÉ EVENTOS ASISTIRÍA EN EL FUTURO CENTRO NATIONAL WESTERN?

POSTER: WHAT EVENTS WOULD YOU ATTEND AT THE FUTURE NATIONAL WESTERN CENTER? ¿A QUÉ EVENTOS ASISTIRÍA EN EL FUTURO CENTRO NATIONAL WESTERN? (English and Spanish text describing the survey purpose)

CONCERTS (CONCIERTOS)

SPORTS TOURNAMENTS (TORNEOS DE DEPORTES)

MOVIES (PELÍCULAS)

FARMER'S MARKET (ANEXO DE AGRICULTORES)

PERSONAL SALES (VENTAS PERSONALES)

FESTIVAL'S / FAIRS (FESTIVALES / FERIAS)

EDUCATIONAL CLASSES (CLASES EDUCATIVAS)

RACES (CARRERAS)

CAR SHOWS (PARADISIUM DE AUTOS)

CONSUMER SHOWS (EXPOSICIONES PARA CONSUMIDORES)

EQUINE & LIVESTOCK SHOWS (EXPOSICIONES PARA GANADERÍA)

OTHER EVENTS (OTROS EVENTOS)

LEGEND (Legend for the event survey)

Open House Boards Highlights

Highlights:

Desire for:

- Riverfront Access
- Picnic Areas
- Outdoor classrooms
- Trails
- Food/Drink/ Coffeehouse
- Trailhead
- Observation Deck
- Interpretive Signage
- Water Quality

01 ARGO PARK (625,000 sq. ft.)

02 HERON POND/ HELLER/ CARPIO-SANGUINETTE PARK (563,000 sq. ft.)

03 GLOBEVILLE PARK (417,000 sq. ft.)

04 ELYRIA PARK (127,000 sq. ft.)

05 SWANSEA PARK (402,000 sq. ft.)

06 DUNHAM PARK (120,000 sq. ft.)

07 RIVERFRONT SITE ENLARGEMENT

WHAT AMENITIES DO YOU WANT?

STICKERS HERE:

	AMPHITHEATER AMFITEATRO	BASKETBALL COURT CANCHA DE BASQUETEBOL	BOULDER WALL MURUDE ESCALADA	OBSERVATION DECK PLATAFORMA DE OBSERVACION	PLAYGROUND PATIO DE JUEGOS	PICNIC AREA AREA DE PICNIC	RIVERFRONT ACCESS ACCESO A LA RIBERA DEL RIO	SKATEPARK PARRAJE DE PATINAJE	SPORTS FIELD CAMPO DE DEPORTES	SWIMMING POOL ALBERCA	TRAILS SENDEROS	VOLLEYBALL COURT CANCHA DE VOLEIBOL	WATER QUALITY CALIDAD DEL AGUA
01				✓	✓	✓			✓	✓			
02	✓			✓		✓						✓	✓
03			✓	✓	✓	✓	✓					✓	
04	✓			✓	✓	✓		✓				✓	
05	✓			✓	✓	✓		✓				✓	✓
06			✓	✓	✓	✓							

Existing Amenity Actividad Actual
 Planned Amenity Actividad Planificada

NATIONAL WESTERN CENTER
RIVERFRONT AMENITIES
ACTIVIDADES EN LA RIBERA DEL RIO

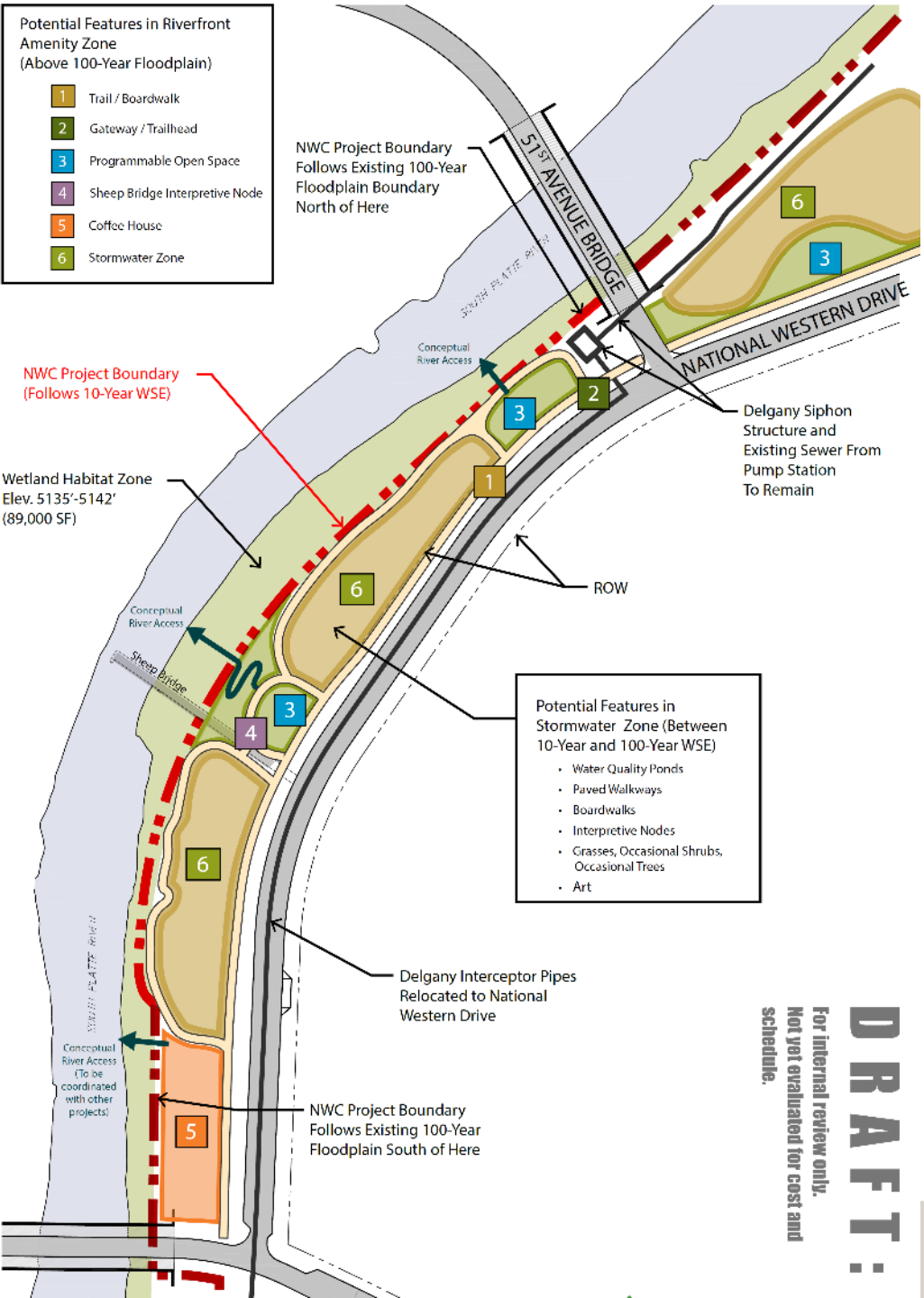




Programming Opportunities

IMAGINE. DISCOVER. CULTIVATE.

- Potential Features in Riverfront Amenity Zone (Above 100-Year Floodplain)
- 1 Trail / Boardwalk
 - 2 Gateway / Trailhead
 - 3 Programmable Open Space
 - 4 Sheep Bridge Interpretive Node
 - 5 Coffee House
 - 6 Stormwater Zone



NWC Project Boundary Follows Existing 100-Year Floodplain Boundary North of Here

NWC Project Boundary (Follows 10-Year WSE)

Wetland Habitat Zone Elev. 5135'-5142' (89,000 SF)

Delgany Siphon Structure and Existing Sewer From Pump Station To Remain

- Potential Features in Stormwater Zone (Between 10-Year and 100-Year WSE)
- Water Quality Ponds
 - Paved Walkways
 - Boardwalks
 - Interpretive Nodes
 - Grasses, Occasional Shrubs, Occasional Trees
 - Art

Delgany Interceptor Pipes Relocated to National Western Drive

NWC Project Boundary Follows Existing 100-Year Floodplain South of Here

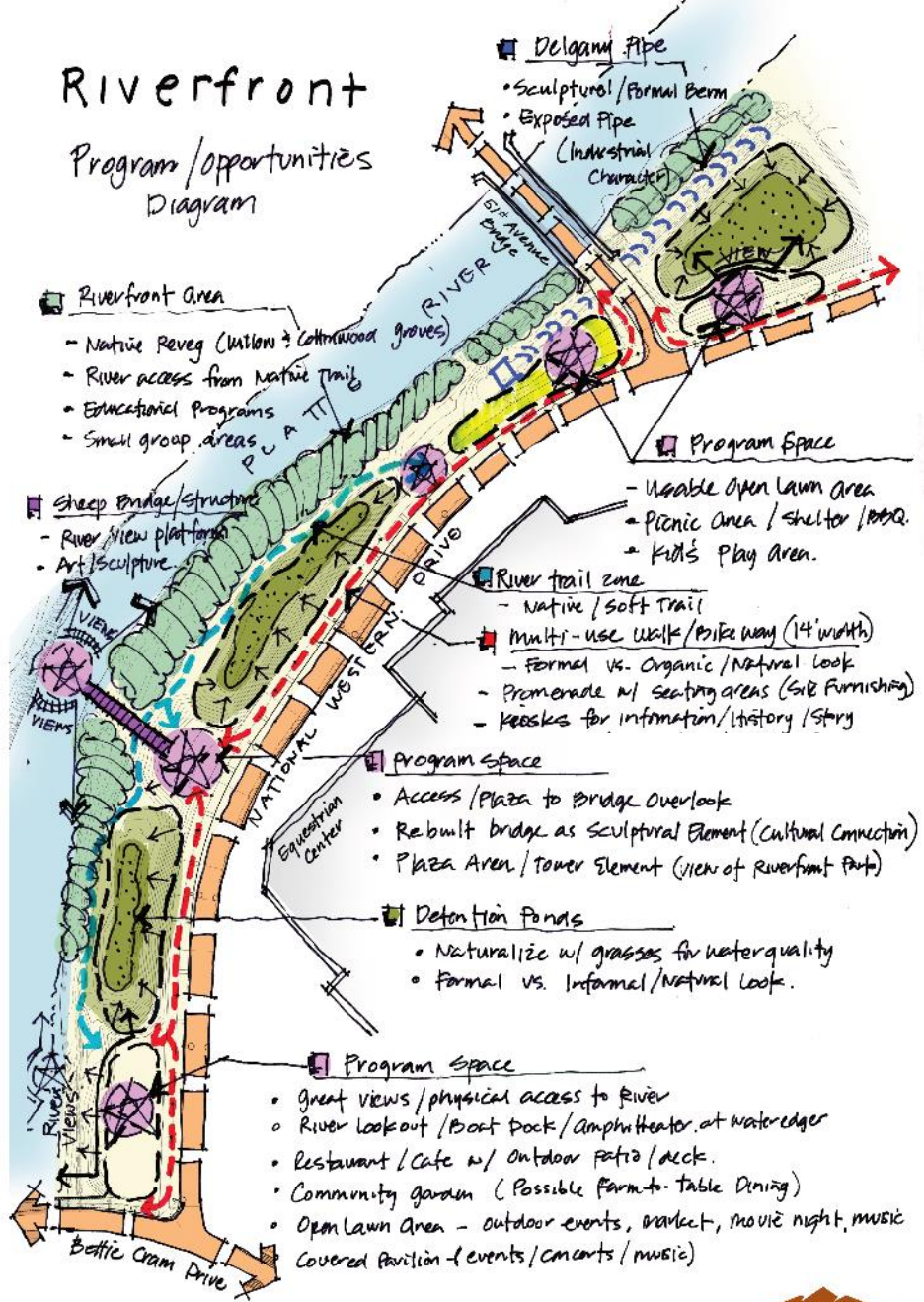


DRAFT:
For internal review only.
Not yet evaluated for cost and schedule.

IMAGINE. DISCOVER. CULTIVATE.

Riverfront

Program/Opportunities Diagram



Riverfront Area

- Native Reveg (Willow & Cottonwood groves)
- River access from Native Trails
- Educational Programs
- Small group areas

Sheep Bridge/Structure

- River view platform
- Art/Sculpture

Program Space

- Usable Open Lawn Area
- Picnic Area / Shelter / BBQ
- Kids Play Area

River trail zone

- Native / Soft Trail
- Multi-use Walk/Bike way (14' width)
- Formal vs. Organic/Natural Look
- Promenade w/ seating areas (See Furnishing)
- Kiosks for information/history/story

Program Space

- Access/Plaza to Bridge Overlook
- Rebuilt bridge as Sculptural Element (Cultural Connection)
- Plaza Area / Tower Element (View of Riverfront Park)

Detention Ponds

- Naturalized w/ grasses for water quality
- Formal vs. Informal/Natural Look

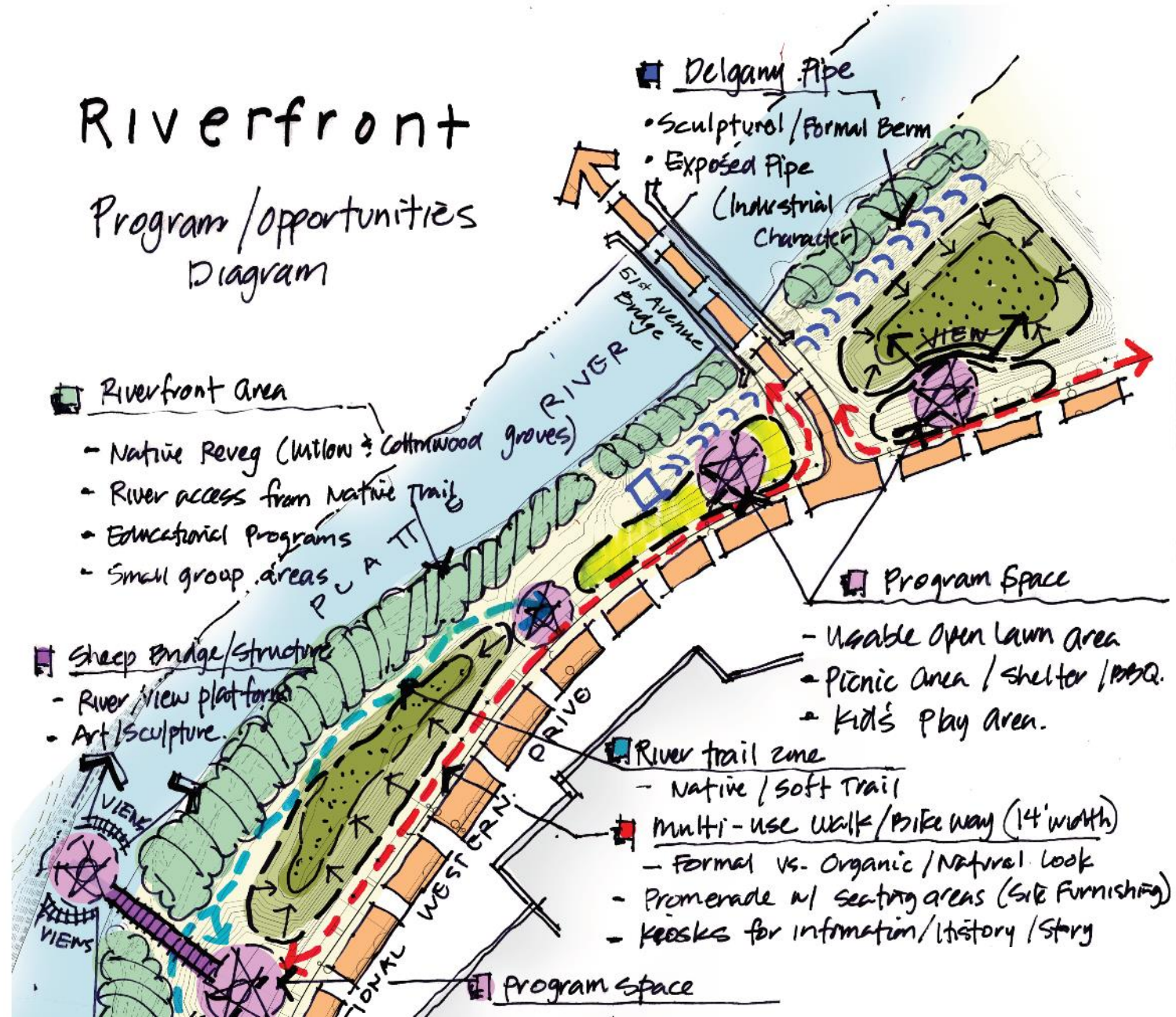
Program Space

- Great views/physical access to River
- River Lookout / Boat Dock / Amphitheater at water edge
- Restaurant / Cafe w/ Outdoor patio / deck
- Community garden (Possible Farm-to-Table Dining)
- Open Lawn Area - outdoor events, market, movie night, music
- Covered Pavilion - events/concerts/music



Riverfront

Program / Opportunities Diagram



Riverfront Area

- Native Reveg (Willow & Cottonwood groves)
- River access from Native Trail
- Educational Programs
- Small group areas

Sheep Bridge/structure

- River view platforms
- Art/Sculpture

Delgany Pipe

- Sculptural/Formal Berm
- Exposed Pipe (Industrial Character)

Program Space

- Usable open lawn area
- Picnic area/shelter/BBQ
- Kid's play area

River trail zone

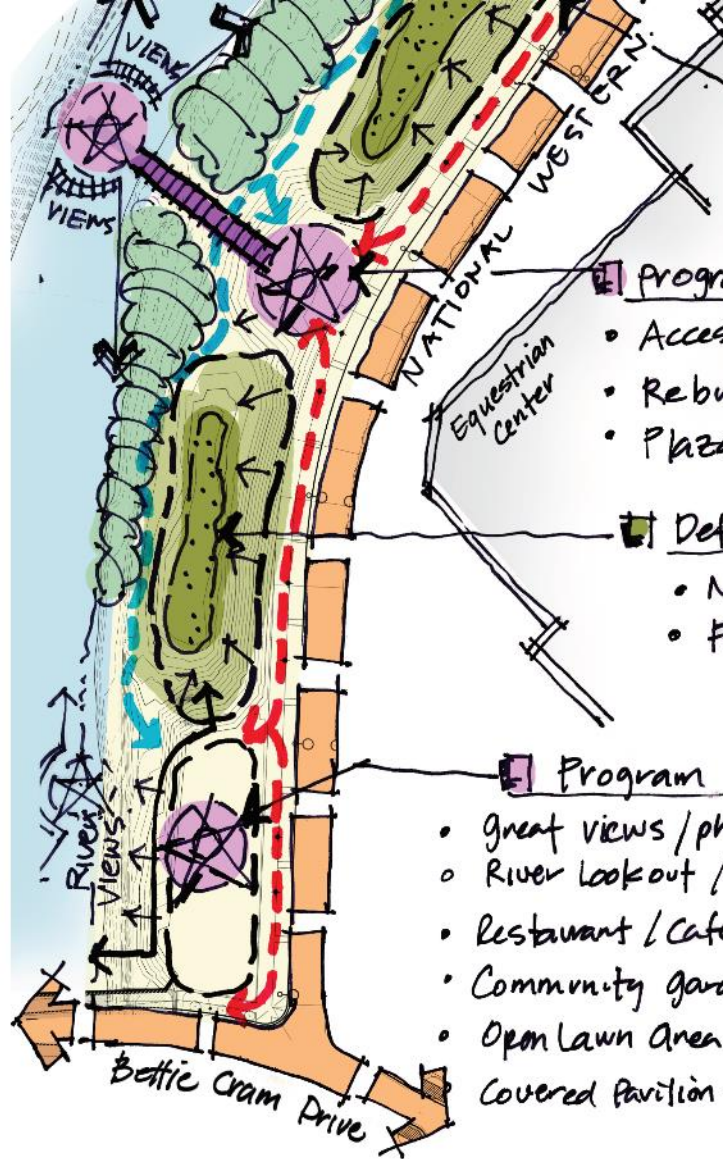
- Native/soft trail

Multi-use walk/bike way (14' width)

- Formal vs. Organic/Natural Look
- Promenade w/ seating areas (Site Furnishing)
- Keosks for information/history/story

Program Space





- Native / Soft Trail
- Multi-use Walk/Bike Way (14' width)
- Formal vs. Organic / Natural Look
- Promenade w/ seating areas (Site Furnishing)
- Kiosks for information / history / story

Program Space

- Access / Plaza to Bridge Overlook
- Rebuilt bridge as Sculptural Element (Cultural Connection)
- Plaza Area / Tower Element (view of Riverfront Park)

Detention Ponds

- Naturalize w/ grasses for water quality
- Formal vs. Informal / Natural Look.

Program Space

- Great views / physical access to river
- River Lookout / Boat Dock / Amphitheater at water edge
- Restaurant / Cafe w/ outdoor patio / deck.
- Community garden (Possible Farm-to-Table Dining)
- Open Lawn Area - outdoor events, market, movie night, music
- Covered Pavilion - events / concerts / music



RIVERFRONT
PROGRAMS / OPPORTUNITIES



IMAGINE. DISCOVER. CULTIVATE.

IMAGINE. DISCOVER. CULTIVATE.



CAMPUS PLACEMAKING: UPDATE

July 26, 2018

IMAGINE. DISCOVER. CULTIVATE.